



## BOATING | KNOW BEFORE YOU GO

All boaters and paddlers must sign-in on iSportsman:  
[www.quantico.isportsman.net](http://www.quantico.isportsman.net).

Personally owned watercraft must obtain a launch pass from the Lunga Boathouse PRIOR TO LAUNCH or, if prior to Boathouse opening, use self check-in. Patrons will be able to launch boats during launch operating hours only.

All personally owned watercraft may only be operated by electric motors within Lunga Reservoir. NO gas powered craft, jet skis, or paddleboards are permitted.

*Lunga Park staff have the right to refuse boat usage to anyone who, in their opinion, is not competent to sail, operate a powerboat, or who smells of alcohol or appears to be under the influence of alcohol or drugs. See MCBO 1700.2.*

*MCCS personnel, at their discretion, may at any time delay or cancel watercraft usage due to existing or projected inclement weather, i.e.. gusty winds, thunderstorms, or steady winds in excess of 16 knots. If lightning is detected within 5 miles, park staff will notify boaters with 3 long blasts from the air horn.*

### SAFETY

Personal Flotation Devices (PFDs) must be **WORN AT ALL TIMES**. Alcoholic beverages are not permitted on MCCS watercraft at any time. All Virginia boaters safety rules apply to personally owned boats, see: [www.dwr.virginia.gov/boating/boaters-guide](http://www.dwr.virginia.gov/boating/boaters-guide).

### LIVE FIRE AREAS

Boating and fishing are allowed in Lunga Reservoir however, there are two OFF LIMITS areas marked by buoys that may be closed due to live fire activity. See map to the right. Please check the range flag located at the boat map.

### ANCHORING

Anchoring at the bottom of the reservoir is not allowed. Patrons should avoid any disturbance of the sediments at the bottom of the reservoir during boating and fishing activities.

### SWIMMING AND WADING

Absolutely no swimming or wading is allowed in Lunga Reservoir. Old ordnance percolation at the reservoir bottom can also be an issue. Please stay out of the water at all times.



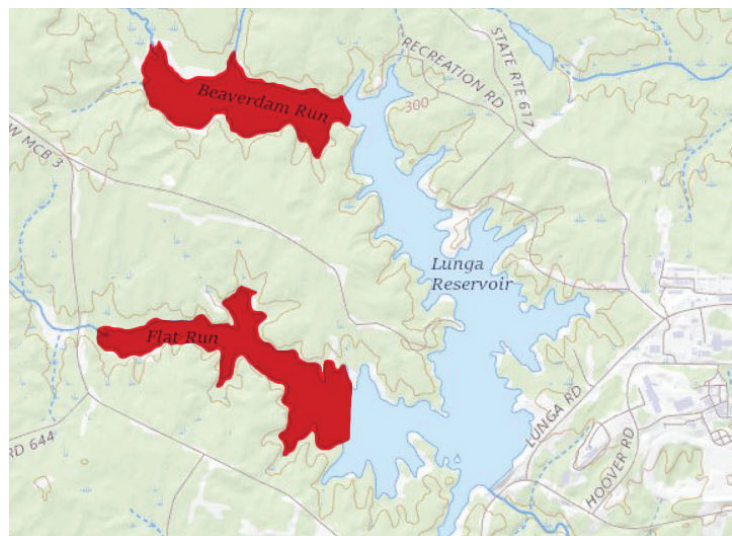
**PARK HOURS\***  
Daily, Sunrise - Sunset

**BOATHOUSE HOURS\***  
*Labor Day - Memorial Day*  
Daily, 7 AM - 3 PM  
*Memorial Day - Labor Day*  
Monday - Thursday, 7 AM - 3 PM  
 Friday - Sunday, 7 AM - 7 PM

*\*Hours subject to change.*

**RULES & REGULATIONS OVERVIEW**

- Personally Owned Watercrafts:
  - Must Sign-In on iSportsman.net
  - Launch Pass Required
- NO Gas Motors, Electric Only
- NO Alcohol
- Flotation Devices Required
- NO Jet Skis or Paddleboards
- NO Anchoring, Swimming or Wading



Areas that are closed during live fire activity. Map provided by USGS.

## FISHING | KNOW BEFORE YOU GO

All fishermen must register for an account on iSportsman: [www.quantico.isportsman.net](http://www.quantico.isportsman.net). Please be advised that fishermen must check-in/check-out using the iSportsman online platform.

### LICENSING AND REGULATIONS

All patrons wanting to fish should refer to MCINCR-MCBQO 11015.2D Fish and Wildlife Management Manual and regulations found at [www.quantico.isportsman.net](http://www.quantico.isportsman.net).

### BAIT

Bait will be available from the Lunga Park General Store during store operating hours.

### LIVE FIRE AREAS

Boating and fishing are allowed in Lunga Reservoir however, there are two OFF LIMITS areas marked by buoys that may be closed due to live fire activity. See map to the right. Please check the range flag located at the boat ramp.

### ANCHORING

Anchoring at the bottom of the reservoir is not allowed. Patrons should avoid any disturbance of the sediments at the bottom of the reservoir during boating and fishing activities. **Magnet fishing is prohibited.**

### SWIMMING AND WADING

Absolutely no swimming or wading is allowed in Lunga Reservoir. Old ordnance percolation at the reservoir bottom can also be an issue. Please stay out of the water at all times.

### PARK HOURS\*

Daily, Sunrise - Sunset

### GENERAL STORE / BOATHOUSE HOURS\*

Labor Day - Memorial Day

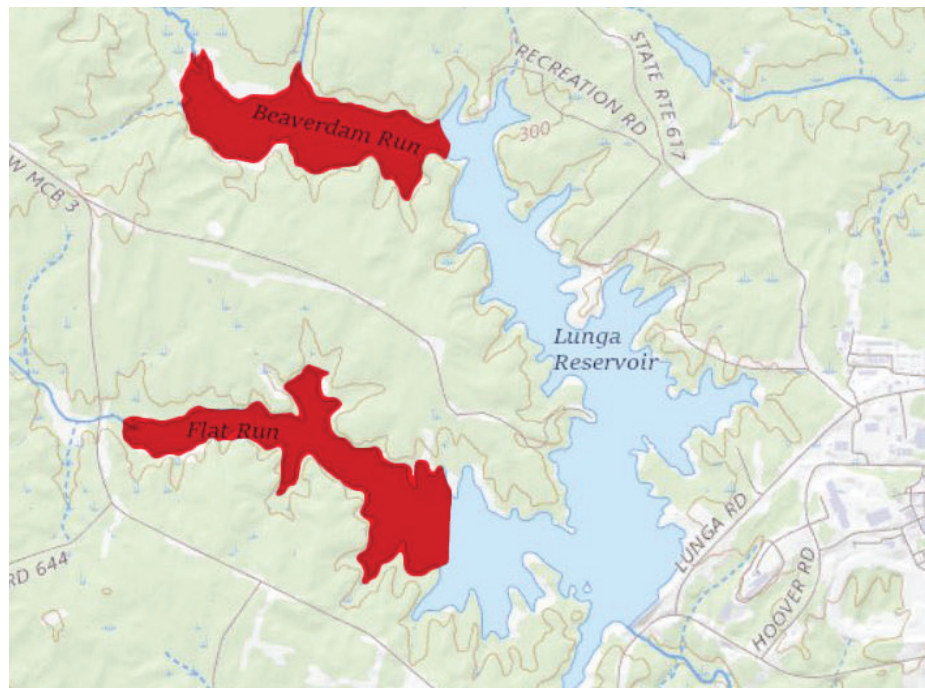
Daily, 7 AM - 3 PM

Memorial Day - Labor Day

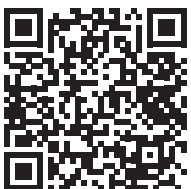
Monday - Thursday, 7 AM - 3 PM

Friday - Sunday, 7 AM - 7 PM

*\*Hours subject to change.*



Areas that are closed during live fire activity. Map provided by USGS.





## WATERCRAFT RENTALS | KNOW BEFORE YOU GO

All boaters and paddlers must sign-in on iSportsman:  
[www.quantico.isportsman.net](http://www.quantico.isportsman.net).

### RENTALS

All rentals are conducted from the Lunga Boathouse or General Store on a first-come, first-served basis.

*Lunga Park staff have the right to refuse watercraft rental to anyone who, in their opinion, is not competent to operate a watercraft, or who smells of alcohol or appears to be under the influence of alcohol or drugs. See MCBO 1700.2.*

*MCCS personnel, at their discretion, may at any time delay or cancel watercraft usage due to existing or projected inclement weather, i.e.. gusty winds, thunderstorms, or steady winds in excess of 16 knots. If lightning is detected within 5 miles, park staff will notify boaters with 3 long blasts from the air horn.*

### SAFETY

Personal Flotation Devices (PFDs) must be **WORN AT ALL TIMES**. Alcoholic beverages are not permitted on MCCS watercraft at any time.

### LIVE FIRE AREAS

Boating and fishing are allowed in Lunga Reservoir however, there are two OFF LIMITS areas marked by buoys that may be closed due to live fire activity. See map to the right. Please check the range flag at the boat ramp.

### ANCHORING

Anchoring at the bottom of the reservoir is not allowed. Patrons should avoid any disturbance of the sediments at the bottom of the reservoir during boating and fishing activities.

### SWIMMING AND WADING

Absolutely no swimming or wading is allowed in Lunga Reservoir. Old ordnance percolation at the reservoir bottom can also be an issue. Please stay out of the water at all times.

### PARK HOURS\*

Daily, Sunrise - Sunset

### GENERAL STORE / BOATHOUSE HOURS\*

Labor Day - Memorial Day

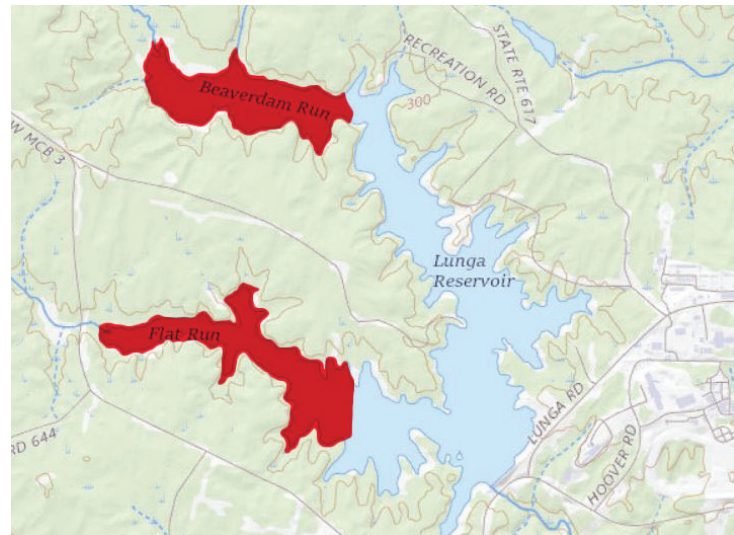
Daily, 7 AM - 3 PM

Memorial Day - Labor Day

Monday - Thursday, 7 AM - 3 PM

Friday - Sunday, 7 AM - 7 PM

\*Hours subject to change.



Areas that are closed during live fire activity. Map provided by USGS.



## CAMPING | KNOW BEFORE YOU GO

### RUSTIC CABINS AND TENT SITES

Rent one of four custom-built Rustic Cabins with amenities: electricity, lighted ceiling fan, and a mini refrigerator. Guests must bring their own sheets, pillows, and towels. Each cabin has an outdoor fire pit with a metal grate for grilling. Restroom facilities are nearby with three private restrooms and showers – one is an ADA accessible restroom and shower.

Cabin 1 – 3 twin beds

Cabin 3 – 1 full bed, 2 twin beds

Cabin 2 – 1 full bed, 2 twin beds

Cabin 4 – 1 queen bed, table & chairs

Fourteen Tent Sites are available for tent camping. Each Tent Site offers a padded camp site, picnic table, and fire pit with a metal grate for grilling. Restroom facilities are nearby with three private restrooms and showers – one is an ADA accessible restroom and shower. Four fire extinguishers are located throughout the tent camping area.

Beautiful walking and biking trails surround the camping area.

All rentals and reservations of Rustic Cabins and Tent Sites are conducted from the Lunga Boathouse or General Store on a first-come, first-served basis. To reserve, call 703.784.5270.

View the pricing for the Rustic Cabins and Tent Sites in the General Info Brochure:

<https://quantico.usmc-mccs.org/recreation-fitness/recreation/outdoor-recreation/lunga-park>

Camping gear available for rent at the Quantico Marina & Outdoor Gear located at 100 Potomac Ave., Quantico, VA. For more info, call 703.784.2359 or visit: [www.bit.ly/quanticomarina](http://www.bit.ly/quanticomarina).

The Oak Area pavilions are available by reservation only.

### CAMPING SAFETY TIPS

- Stay up to date with the weather.
- Heavy rainfall can cause flash flooding. Use caution while camping, hiking and biking.
- Remember the expression “When thunder roars, go indoors!” If you hear thunder or see lightning, go immediately to an enclosed building or hard-topped vehicle.
- No swimming or wading is allowed in Lunga Reservoir. Stay out of the water at all times. Old ordnance percolation at the reservoir bottom can be an issue.
- Pets are allowed but must be on a leash at all times.
- The park is monitored at all times by Provost Marshal (PMO). Violators will be prosecuted.

### PARK HOURS\*

Daily, Sunrise - Sunset

### GENERAL STORE / BOATHOUSE HOURS\*

*Labor Day - Memorial Day*

Daily, 7 AM - 3 PM

*Memorial Day - Labor Day*

Monday - Thursday, 7 AM - 3 PM

Friday - Sunday, 7 AM - 7 PM

*\*Hours subject to change.*

### RULES & REGULATIONS OVERVIEW

- RV Camping is Not Available
- NO ATV's Allowed
- NO Hunting
- No Metal Detecting

### SPEED LIMIT

- 5 mph in Campground Area
- 15 mph on main roads

### QUIET HOURS

- 9 PM - 6 AM

## RECREATION | KNOW BEFORE YOU GO

### RENTALS

All rentals and reservations of picnic sites, pavilions, and the beach volleyball court will be conducted from the Lunga Boathouse or General Store on a first-come, first-served basis.

View the pricing for water sports rentals and pavillion rentals in the General Info Brochure:

<https://quantico.usmc-mccs.org/recreation-fitness/recreation/outdoor-recreation/lunga-park>

### ANIMALS

Pets are allowed but must be on a leash at all times.

### PARK HOURS\*

Daily, Sunrise - Sunset

### GENERAL STORE / BOATHOUSE HOURS\*

*Labor Day - Memorial Day*

Daily, 7 AM - 3 PM

*Memorial Day - Labor Day*

Monday - Thursday, 7 AM - 3 PM

Friday - Sunday, 7 AM - 7 PM

*\*Hours subject to change.*